



Omnibus - Codebeamer Adapter Datasheet Document

Kovair Software, LLC.
1300 El Camino Real, Suite 100
Menlo Park, CA 94025
www.kovair.com

Document Version History		
Release	Date	Comment
Initial Release	03/12/2024	Created initial datasheet version.

Table of Contents

Business Need & Tool Overview	4
Kovair Adapter for Codebeamer	4
Features & Benefits	4
Why Integrate Codebeamer with Kovair?	5
Why Use Codebeamer Adapter by Kovair?	5
Entities Supported in Kovair Codebeamer Adapter	Error! Bookmark not defined.
A. Entities Exposed by Codebeamer	Error! Bookmark not defined.
B. Entities Mapping with respect to both Codebeamer and CATIA No Magic	5
Use Cases of Kovair Integration with Codebeamer	6
A. Consider the following ALM-MBSE tools integration Use Case	7
B. Also consider these two Codebeamer - CATIA No Magic Use Cases	Error! Bookmark not defined.
C. How is the Codebeamer Integration with CATIA No Magic carried out?	7



Requirements



Block, Use Case, Actor



Business Need & Tool Overview

Modernizing engineering procedures, tool chains, and product design is crucial in the age of intelligent, digitally connected products. It is imperative to be able to connect your fragmented software engineering tool environment with a central development platform through out-of-the-box integrations.

To cope up with this dynamic demand and achieve an end-to-end traceability throughout the software engineering lifecycle, from the requirements stage all the way through testing and release, Kovair has come up with this adapter for Codebeamer.

- **Codebeamer** is an ALM platform for advanced product and software development. With its capacity to configure product lines, this open platform expands the capabilities of ALM and offers special configurability for intricate procedures.
- Kovair provides a vendor-neutral integration platform called **Kovair Omnibus** Integration Platform to which the best-of-breed ALMs (**A**pplication **L**ifecycle **M**anagement), PLMs, and other enterprise tools can be integrated using its dedicated adapters.
- The **CATIA No Magic** tool as a solution encompasses all the best diagramming, collaboration, persistence, and documentation capabilities while offering more customized capabilities tailored to systems engineering needs.

Kovair Adapter for Codebeamer

Kovair Omnibus Adapter for **Codebeamer** ALM connects this tool with other supported ALM / PLM tools or MBSE tools like **CATIA No Magic**, by enabling the synchronization of supported artefacts.

Features & Benefits of Codebeamer Adapter

The Kovair Omnibus adapter for Codebeamer provides the following features and benefits:

- **Improved Project Management with Agile Support** - This adapter allows you to handle all aspects of your software development project management with Codebeamer, including project planning, issue tracking, and requirements management.
- **Tools Integration** - It's simple to integrate Codebeamer into your current software development workflow. You can also easily integrate a gamut of supported tools through this adapter.
- **Customization** - You can create custom workflows, fields, and templates to suit your project requirements with the help of the Kovair adapter for Codebeamer.

Why Integrate Codebeamer with Kovair?

After Codebeamer is integrated with Kovair Omnibus, other ALM / PLM / MBSE tools that are part of the Kovair Omnibus ecosystem can also be connected to form an integration between Codebeamer and the supported tool.

Codebeamer integrates with a wide range of other software development tools. Gain full agile capabilities, obtain view of end-to-end traceability, and carry out requisite requirements management, software risk management and test management.

Why Use Codebeamer Adapter by Kovair?

Some of the advantages offered through this bi-directional integration are mentioned as follows:

- **Increased Collaboration** - The secret to better collaboration is increasing organizational efficiency. Utilize an all-in-one, enterprise-ready development hub to synchronize teams and improve cooperation.
- **Unified Traceability across Connected Tools** - It allows users to be easily adapted to specific development needs. With this Kovair adapter, Codebeamer users can monitor their work from requirements to delivery, making it easy to track progress and ensure that everything is on track.
- **Better Management of Mapped Artefacts** - Improved requirements management results in better project execution through the mapping of compatible artefacts and exposed entities.

Entities Exposed in Kovair Codebeamer Adapter & Entities Mapped with CATIA No Magic

A. Entities exposed by Codebeamer to the Kovair Omnibus adapter

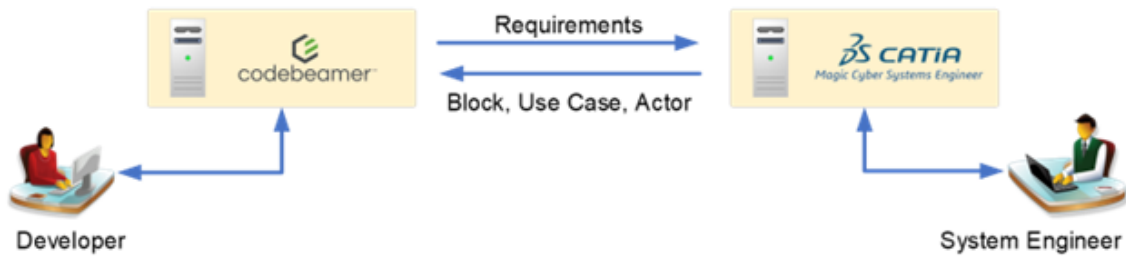
Serial No.	Entity Name in Codebeamer
1	System Requirement Specification [SYS2]
2	System Architectural Element

B. Entities mapping done in Codebeamer with respect to CATIA No Magic

Serial No.	Entity Name in Codebeamer	Corresponding Entity Name in CATIA No Magic
1	System Requirement Specification [SYS2]	Requirement
2	System Architectural Element	UseCase
		Actor
		ProxyPort
		State
		Block
		Call Behavior Action
		Decision Node
		Domain
		Part Property

Use Cases of Kovair Integration with Codebeamer

Automate process control for your specific requirements and streamline requirements management methodologies through tool integration with Codebeamer adapter from Kovair.



A. Consider the following ALM-ALM / ALM-PLM / ALM-MBSE tools integration Use Case

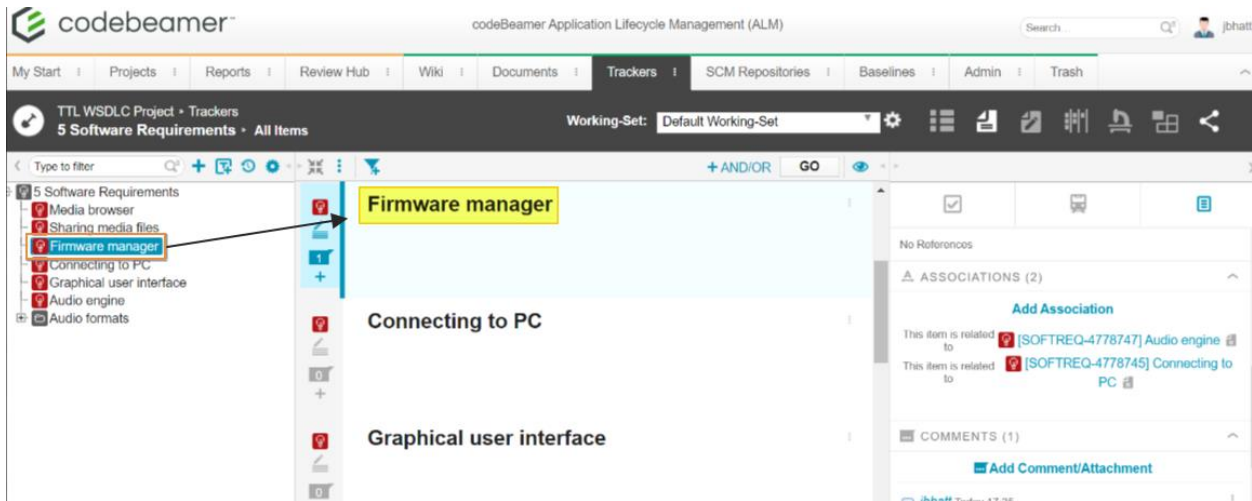
You can link System Requirement Specification(s) and System Architectural Element(s) in Codebeamer ALM with supported entity of connected tool - as per the entity mappings configured.

Use Case	Description	Scenario
Unidirectional Requirements Synchronization	Export of requirements from Codebeamer to target tool and subsequent import from source tool to Codebeamer is possible. This keeps the requirements synced across the connected tools.	Transfers requirements between Codebeamer supported tool unidirectionally. <i>For example, Codebeamer requirement can be exported to CATIA No Magic.</i>
Bidirectional Requirements Synchronization	The requirements and relations once populated in Codebeamer, are synchronized bi-directionally from or back to Codebeamer.	Requirements data will be synced bi-directionally, <i>for example from Codebeamer to CATIA No Magic and then from CATIA No Magic to Codebeamer.</i>

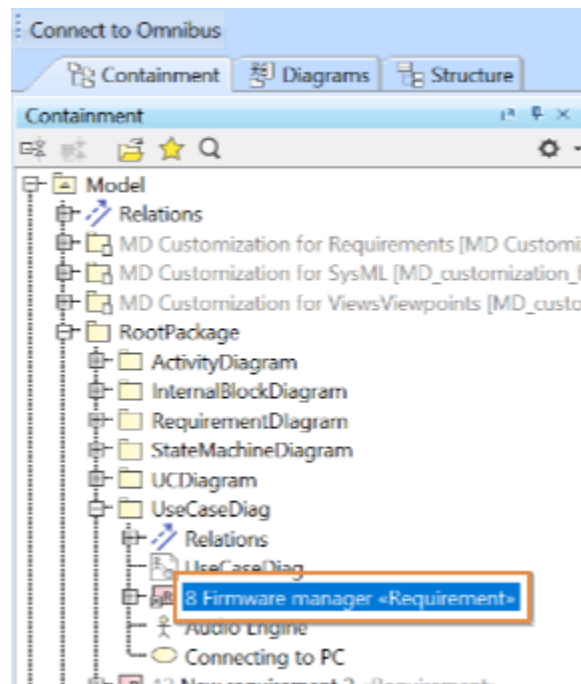
B. How is the Codebeamer Integration with CATIA No Magic carried out?

To view the entire dataset flow from Codebeamer to CATIA No Magic, and then from CATIA No Magic back to Codebeamer, consider the following steps that are described briefly:

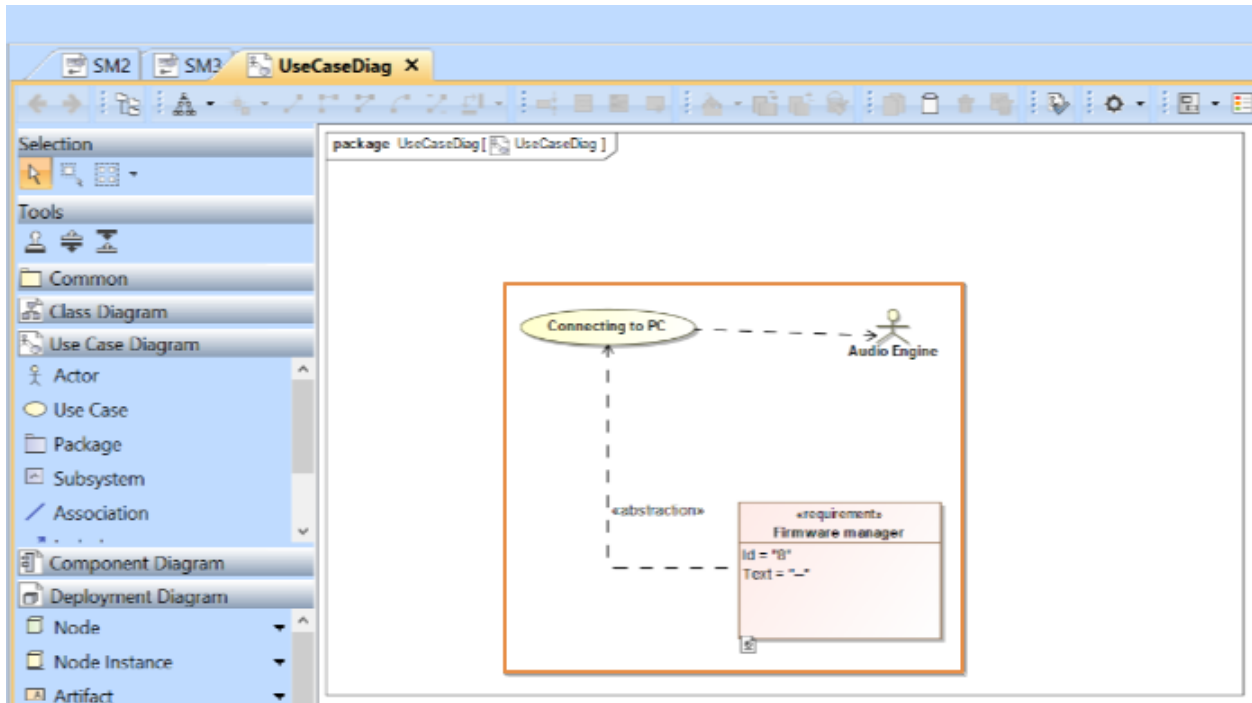
- 1. Requirement exists in Codebeamer** – Let us begin by considering that the following requirement exists in the Codebeamer tool. This assumption is the first step.



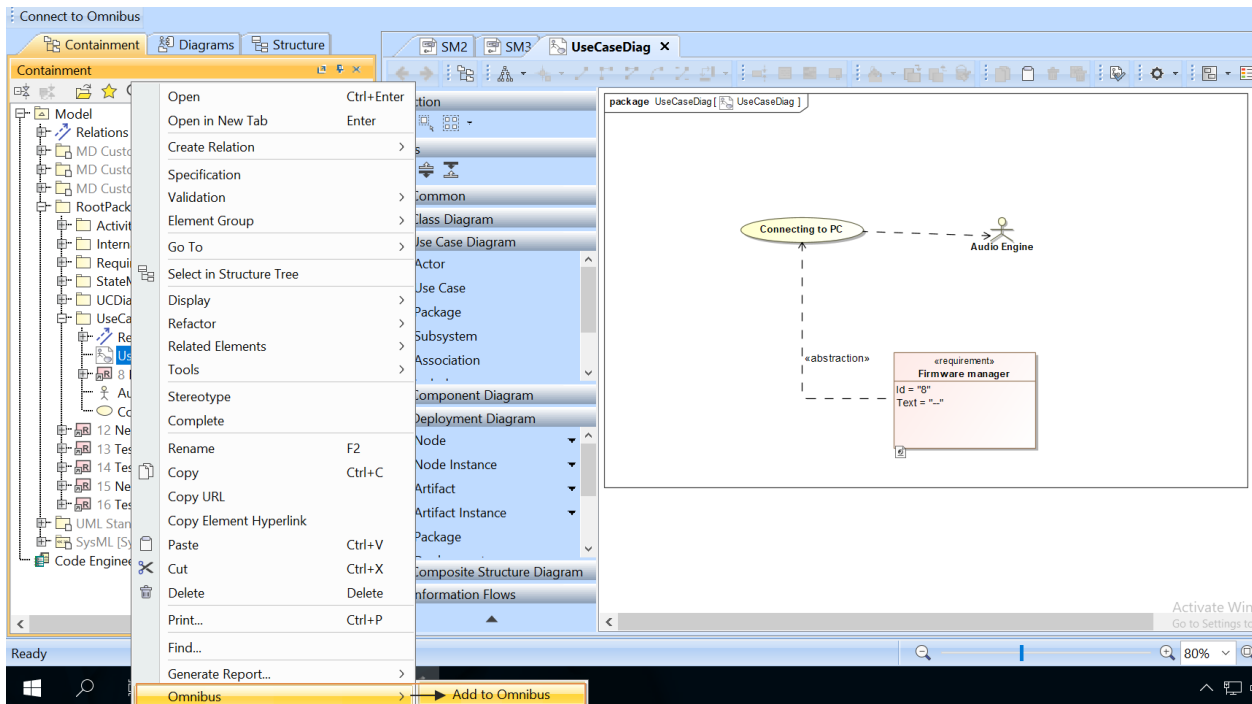
2. **Codebeamer to CATIA No Magic flow** – Requirements dataset gets exported to the CATIA No Magic tool using the Codebeamer Kovair plugin. Right click on the CATIA No Magic package under which the Codebeamer requirements should flow to or under which the requirements should be present within the CATIA No Magic application.
3. **Mapping the Model in CATIA No Magic** – In the third step, let us view the same ‘*Firmware manager*’ requirement entry, as present (synced) in the CATIA No Magic tool.



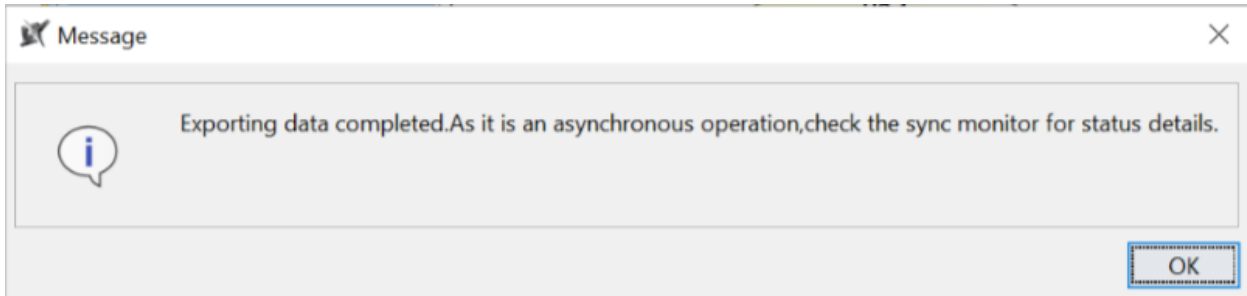
Now, let us consider that the system engineer using the CATIA No Magic tool has created the blocks, actors and relation mappings or connections as required.



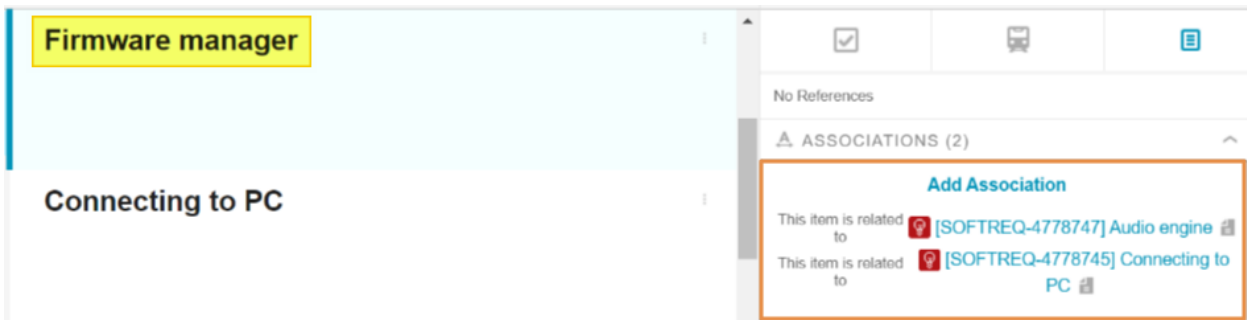
4. Exporting using Kovair Omnibus adapter – Now in this fourth step, let us consider that the user has designed the model and wants to move the model back into the source (Codebeamer) tool.



5. Successful data export to Codebeamer from CATIA No Magic – A related success notification gets prompted in the form of a message box.



6. **Viewing the associations & model diagrams** – Now if you investigate the requirement within the Codebeamer tool, you can find the associations get displayed as per the modelling done in CATIA No Magic.



During the flow from CATIA No Magic to Codebeamer - where the traceability is established, the diagram screenshot is also synced with the Codebeamer 'Firmware manager' requirement as an attachment. This can be loaded and to view the exact model diagram as done in the CATIA No Magic tool. Refer to the following screenshot.

