



Kovair Omnibus Integrations Why Are We Better

Kovair Software, Inc.

2603 Camino Ramon, STE 200
San Ramon, CA 94583
www.kovair.com
sales@kovair.com

Document Version History

Release	Date	Reason
Version 1.0	01/14/2014	Initial Release
Version 2.0	02/15/2016	New feature enhancements included

Kovair Software is a Silicon Valley based software Product Company specializing in the domain of Integrated Application Lifecycle Management - ALM solutions. Our objective is to make the software development process better, faster and collaborative – anytime, anywhere, using any tool, platform and technology. Kovair’s focus on integrating third party best-of-breed tools enables creation of applications in a synchronized tools environment.

Table of Contents

Introduction.....	1
Unique Aspects of Omnibus Integration Platform.....	1
Ability to Sync and Link.....	1
Enables non-OSLC Compatible Tools to act like OSLC Providers.....	1
Integration of Attachments, Comments, Rich Text.....	2
Synchronization of Relations.....	2
Ability to Call External Web Services.....	2
Consolidated Reporting and Dashboards from Multiple Tools.....	2
Support for Data Federation Using Plug-ins.....	3
Ability to Define Cross Tool Relations from Plug-ins.....	3
Powerful Plug-ins for IDEs.....	3
ADSI/LDAP Support.....	4
Ability to Define Processes Spanning across Multiple Tools.....	4
Reliability Mechanisms.....	5
Context Based Scalability.....	5
Real-Time Monitoring of Events and Actions.....	7
Statistical Dashboard for Monitoring All Transactions.....	7
Conflict Resolution.....	9
RSS Feed Subscription.....	9
Single Menu Option for Troubleshooting.....	9
Project Setup for Replication of Configuration.....	10
Conclusion.....	10

Introduction

The purpose of this document is to highlight the powerful capabilities of the Kovair Omnibus Integration Platform. These unique features of the Omnibus platform set it apart from other integration technologies available in the market. All the below mentioned features and capabilities can be easily configured in Omnibus through drag-and-drop configuration screens and without a single line of coding. Kovair Omnibus works behind the scenes to provide fully automated, enterprise-grade synchronization among the tools used by software development and delivery teams. Everyone works on their tools of choice, but has near real-time access to updates other team members make in theirs.

Unique Aspects of Omnibus Integration Platform

Ability to Sync and Link

Kovair Omnibus offers a unique capability to use both the synchronization model and the link based model of integration. This choice is available for the users of the new generation of IBM Jazz tools – DOORS Next Generation, Rational Team Composer (RTC) and Rational Quality Manager (RQM). Along with synchronization of artifacts across tools, Kovair’s tool based generic OSLC provider allows customers to create OSLC links with artifacts from other tools which are connected to Kovair Omnibus. The end users have the choice of whether to “Sync” or “Sync with Link” and it is not dictated by the Omnibus technology. This allows customers to use one or both of the approaches as deemed fit for the particular use case that is being configured in the integrated scenario.

Enables non-OSLC Compatible Tools to act like OSLC Providers

Kovair’s generic OSLC Provider allows customers to create OSLC links with artifacts from other tools which are connected to Kovair Omnibus. These tools may or may not support OSLC type of linking but by connecting to Omnibus their artifacts automatically becomes available for OSLC linking from the native OSLC tools like – RTC, DOORS Next Generation and RQM.

Integration of Attachments, Comments, Rich Text

Kovair Omnibus synchronizes Attachments, Comments and Rich Text data between the connected tools. Different formats of rich text data are effectively interchanged between the tools offering Rich Text capabilities. Different structures for storing and displaying Comments are also handled through Kovair.

Synchronization of Relations

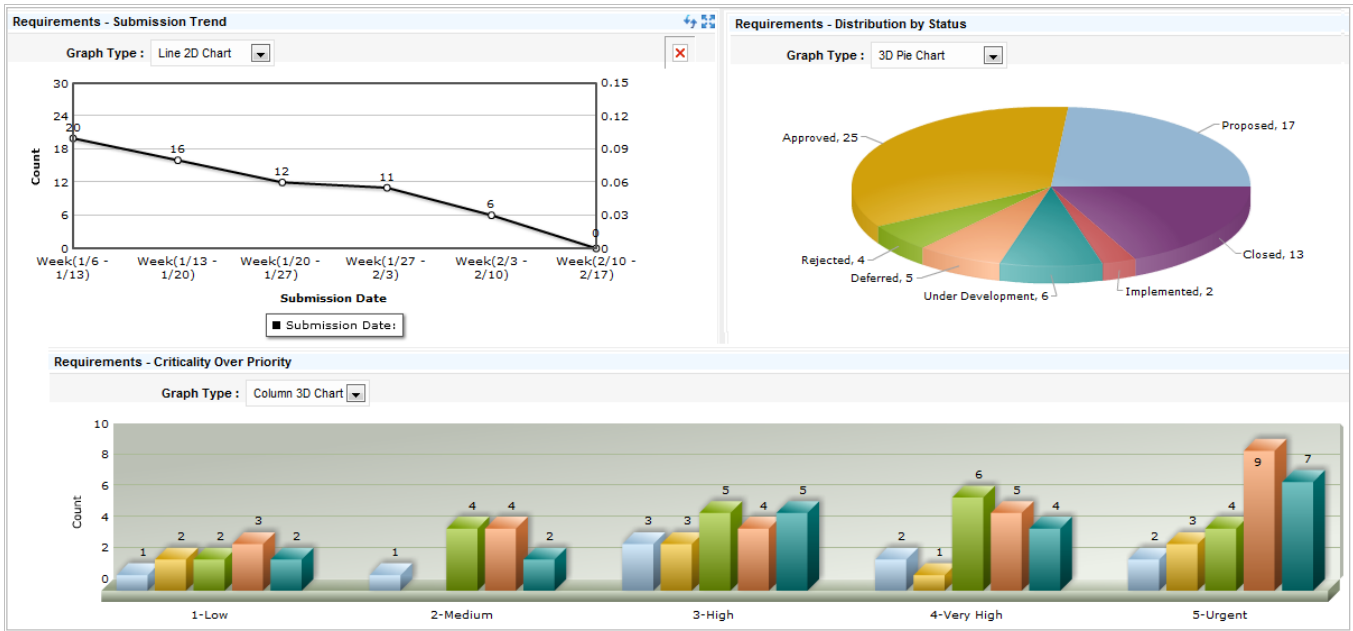
Apart from the data synchronization between tools, Kovair also synchronizes Relations defined in one tool to the other tools that have the capability to handle similar relations. For example, Requirements and their linked Test Cases can flow from Quality Center to Microsoft TFS, maintaining the links between the Requirements and Test Cases.

Ability to Call External Web Services

Kovair provides a mechanism to send web service calls to any available web service. Field values from any artifact can be passed as parameters to these web service calls and the return values can be captured in selected fields of artifacts. This feature can act as a window to execute custom code on events occurring in the integrated ecosystem and can be used to perform all kinds of activities on internal or external systems.

Consolidated Reporting and Dashboards from Multiple Tools

Kovair has the ability to optionally act as a central repository replicating all artifact data from the connected tools. This allows Kovair to generate rich Dashboards and Reports based on actual data flowing in from all the tools. This eliminates the need to manually consolidate data from various tools to generate meaningful metrics.



Support for Data Federation Using Plug-ins

Along with the default capability of Kovair Omnibus to synchronize data between tools, Kovair also offers the capability to directly view/add/edit data from different repository based tools from within IDEs like Eclipse, VSTS, RSA and RAD. In addition source code files of specific versions and their differences can be fetched on demand from the configuration management tools integrated with Kovair.

Ability to Define Cross Tool Relations from Plug-ins

Kovair also allows customers to link items from different repository tools through the Kovair Plug-ins for Eclipse, VSTS, RSA and RAD. These cross-tool relations are not directly supported by the tools themselves, but are made available by Omnibus. For example, a Method from an Eclipse source code file can be linked to a Design Element in RSA or VSTS Architect.

Powerful Plug-ins for IDEs

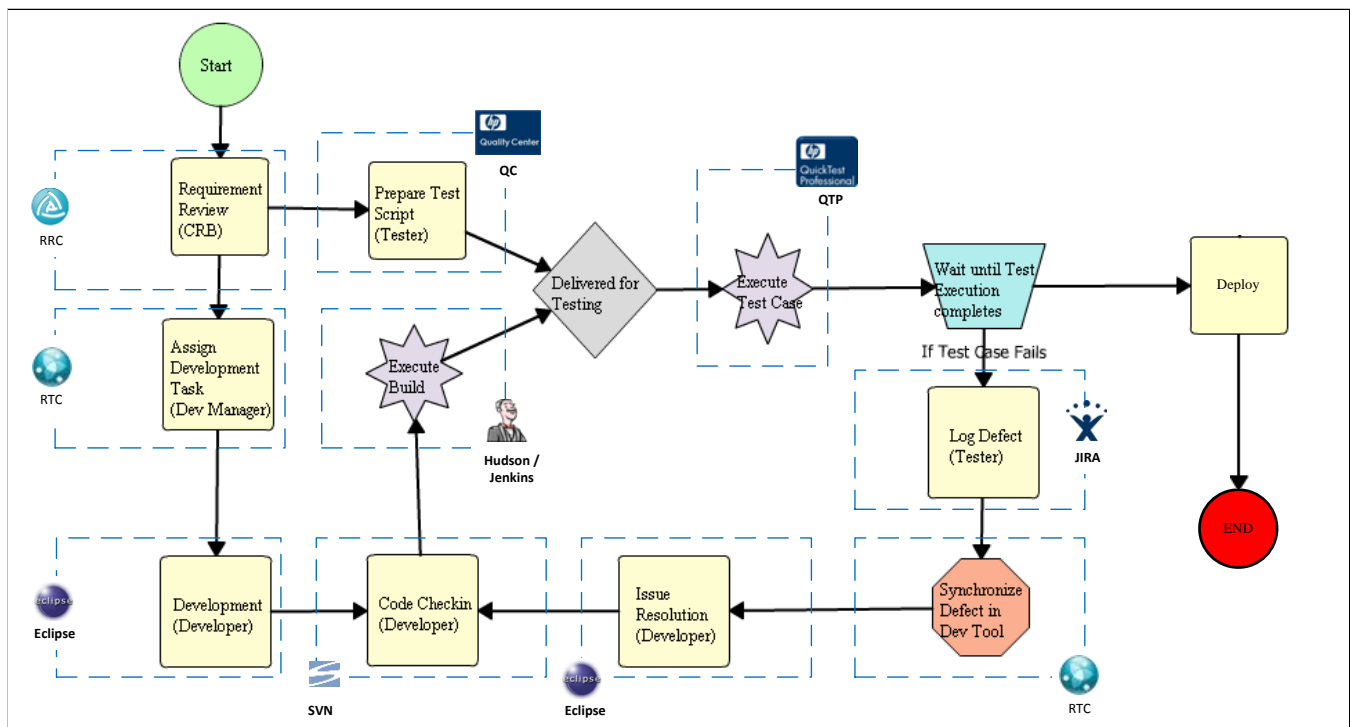
Kovair's Plug-ins for Eclipse, VSTS, RSA and RAD allow users to selectively trace individual design diagrams, design elements, files, classes, methods and unit test methods. Users can select the mentioned items and add them to proxy repositories through a simple mouse click operation. This enables them to create links between these items and other artifacts from any connected tool. These proxy artifacts and their links are available across all project users and all IDEs.

ADSI/LDAP Support

Kovair’s extensive support for ADSI (Active Directory Service Interfaces) integration enables organizations to leverage the benefit of SSO (Single Sign-On) environment. This eliminates the need for administrators to configure or map users of different tools. If the same ADSI user has an access to all the tools participating in integration, the user mapping will not be needed and the same authentication will be used to access all the tools. In special scenarios, where some users may not have the access to a particular tool of the ecosystem, users will be able to apply a regular user mapping which will override the built-in ADSI based auto-mapping for those users.

Ability to Define Processes Spanning across Multiple Tools

Kovair’s built-in graphical workflow designer and powerful workflow engine provides the unique capability to define and execute processes spanning across multiple tools. These tools may or may not have their own process capabilities. An event occurring on a remote tool can trigger an activity in the process defined for that artifact in Kovair, which in turn can modify the state of other related artifacts in other connected tools. The workflow engine in Kovair can automatically generate human tasks for the users based on their roles and the required activity on the artifact in question. For example, a Requirement submitted in a Requirement Management tool can trigger Kovair to send a notification to the Business Analyst and create a “Review Requirement” Task for the Analyst. On reviewing and approving this Requirement, Kovair can push this Requirement to the Test Management tool as a Test Requirement. Therefore, using Kovair Omnibus, organizations can implement process driven workflow when the connected tools do not have a built-in process in place.



Reliability Mechanisms

Kovair Omnibus has customizable built-in reliability mechanisms to ensure that no data is lost during transfer from one tool to other. In an integrated environment, it is common to encounter scenarios such as the target tool instance was temporarily unavailable which resulted in the items not getting synchronized properly. This possibility is not there when Kovair Omnibus is being used. Organizations can configure retry operations for each data flow specifying how many attempts should be made to perform the action on the target tool and at what interval. Omnibus retries to perform the action based on these configurations and if it is still not able to push the action through, then notifications are sent to the project administrators. Another batch process can be configured to run at longer intervals to pick up all such failed actions and execute them on the target tools. All failed actions are also visible on Kovair screens from which they can be deleted or manually pushed to the target tools.

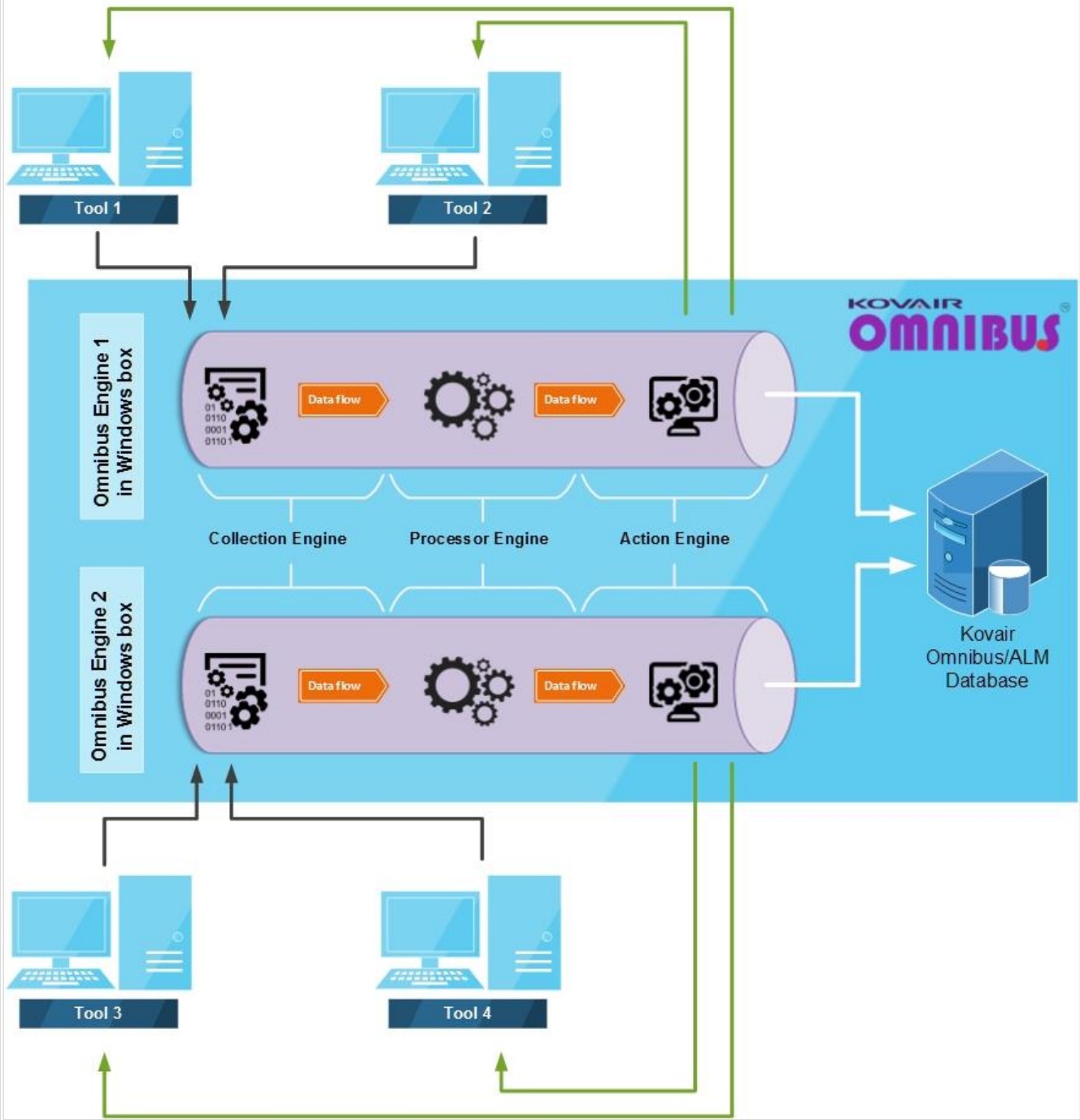
Context Based Scalability

Kovair Omnibus has increased its support for scalability by introducing a concept of multiple engine deployment. Multiple instances of Omnibus engine components can be deployed on different servers to distribute the load of synchronization. Each of these engine components can be considered as a 'Context' and each Context has a job of managing its own set of tools.

In order to get the benefit of this distributed environment, users need to select the Context during registration of a tool. Once configured, processing of events and actions will be handled by each of these Contexts as per configuration requirement. The configuration of each of these Contexts is stored in the central repository of the main application.

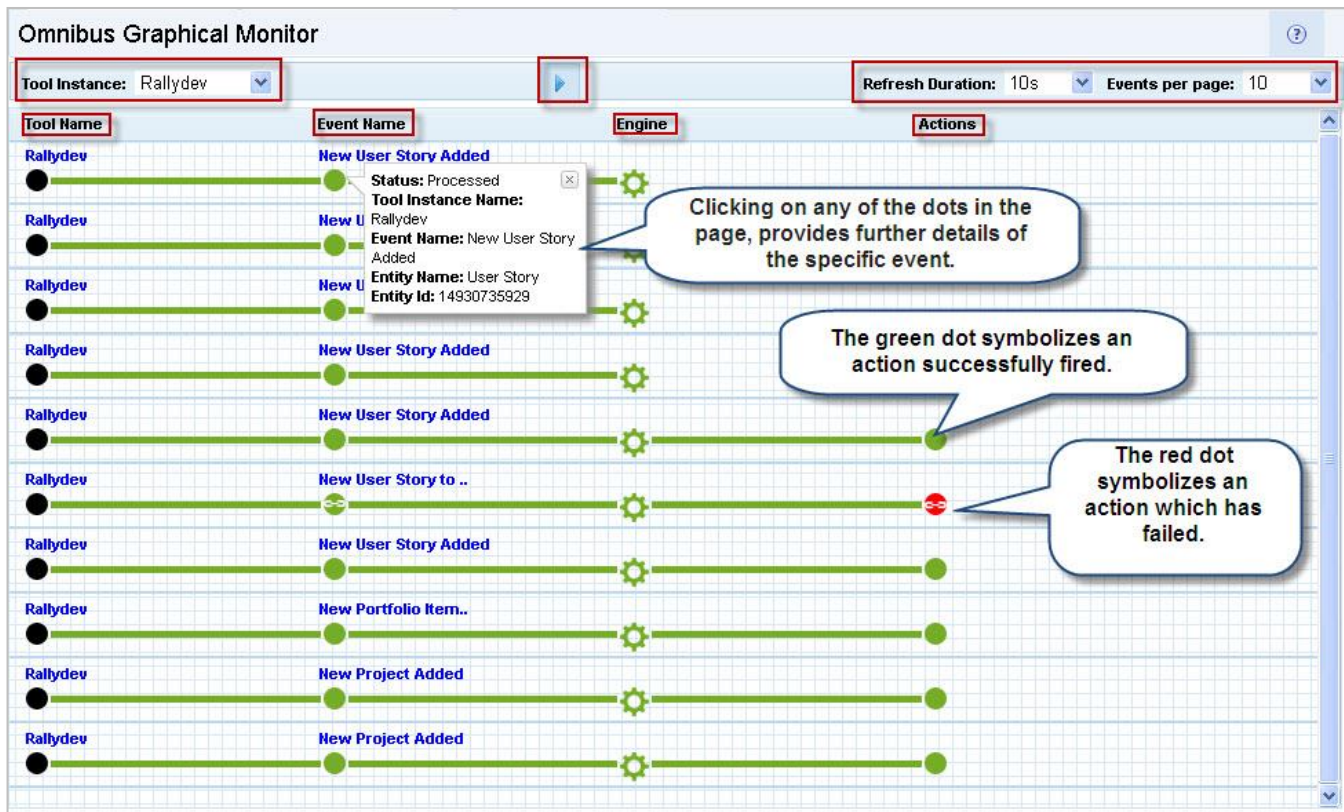
An architectural diagram of the above scenario is given below.

How Omnibus Context Works



Real-Time Monitoring of Events and Actions

One of the major aspects of data synchronization is monitoring of data movement both real-time and history- based. Kovair Omnibus helps users to monitor the data movement at every stage of integration starting from the point of initiation to the final target. Kovair has an on-screen graphical interface for real-time monitoring of data exchange for every Event and Action between two tools. Using the Omnibus Graphical Monitor, an admin can check what data is coming from which tool and where it is getting executed. If some errors occur, the Monitor immediately shows them to the user.



In addition, there are also options for viewing different logs for Events, Actions as well as Summary. This helps organizations to ensure flawless synchronization of data between tools.

Statistical Dashboard for Monitoring All Transactions

Kovair provides an on-screen dashboard displaying statistical analysis of all synchronizations happening between tools. Omnibus Dashboard is an integration visualizer which provides the administrator the top level performance statistics of the Omnibus orchestration. This capability of Kovair Omnibus allows users to track the health of synchronization happening between a pair of tools and take necessary corrective actions, if needed.

Home x
List: Users x
Statistics: Om... x

Tasks

- Omnibus
- Registration
- Entity Mapping
- Relationship Mapping
- Service Flow
- User Mapping
- Detail Event Log
- Detail Action Log
- Summary Log
- Omnibus Monitor
- Export
- Import
- RSS Feed
- Statistics
- Mail Template

Shared

Synchronization Statistics

- Choose Required Value

First Instance : Kovair (Kovair)

From : 01/01/2014

Second Instance : Remedy (Remedy)

To : 01/05/2016

RESET

Kovair and Remedy

- Summary

Day Wise Combined Successful Data Flow (28)

Date Period	Events Count
12Aug2015	7
03Sep2015	7
08Sep2015	5
09Sep2015	3
10Sep2015	6

Success To Failure Percentage

Success, 100% Failure, 0%

● Success ● Failure

Record Statistics

28

SUCCESS

0

FAILURE

0

CONFLICT WINS

0

CONFLICT LOSS

1.0 s

AVG SYNC DURATION

- Details

Record Action to Kovair

ADDED	MODIFIED	DELETED
0	0	0
TOTAL RECORD ACTIONS		
0		

Record Action to Remedy

ADDED	MODIFIED	DELETED
28	0	0
TOTAL RECORD ACTIONS		
28		

Event Queued From Kovair

QUEUED	CONFLICT QUEUED
0	0
WINS	LOSS
0	0

Event Queued From Remedy

QUEUED	CONFLICT QUEUED
0	0
WINS	LOSS
0	0

- Service Flow Details

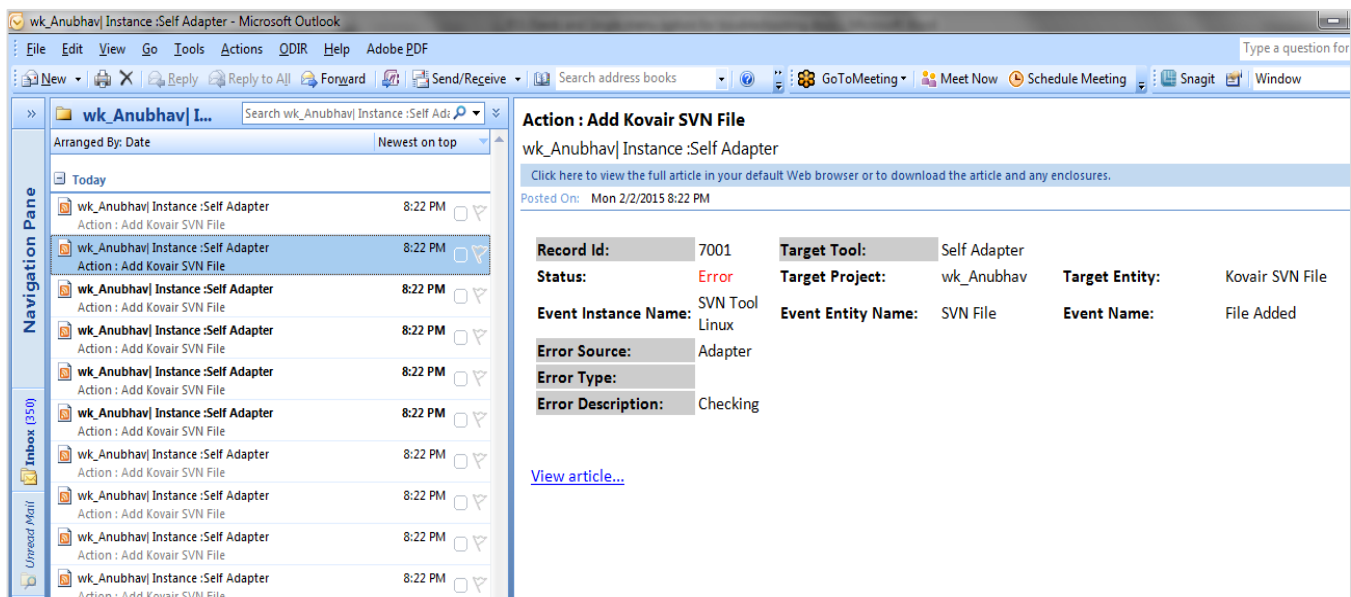
Service Flow Name	Event From	Action To	Records Count
[Kovair --> Remedy] Incident Modified	Kovair	Remedy	0
[Remedy --> Kovair, Rally] Incident to Defect Added	Remedy	Kovair	18
[Remedy --> Kovair] Incident	Remedy	Kovair	10
[Remedy --> Kovair, HP ALM] Change Request Added	Remedy	Kovair	0

Conflict Resolution

Kovair’s Omnibus integration platform has extensive support for both manual and rule based conflict resolution. Through some mouse clicks, users can configure conflict resolution rules in Kovair. Kovair also has support for manual resolution of conflicts where users can decide on the method of resolution by viewing the data for which conflict occurred.

RSS Feed Subscription

Kovair’s Omnibus integration platform has extensive support for both online and offline monitoring of data transaction happening among different tools. It allows users to subscribe to the RSS Feed against any configured service flow for integration. Once subscribed, these feeds can be hooked into clients like MS Outlook or RSS feed readers; and once hooked, notifications for all successful and erroneous transactions along with the feed details appear in the Outlook mailbox of the user. On opening a feed, users can see the details of an event and action that failed. Thus, users can monitor all synchronization details even in the offline mode.



Single Menu Option for Troubleshooting

Kovair Omnibus has a single point log interface which enables users to view the status of integration for any participating tools and do the basic troubleshooting. Once this interface is invoked, an interface shows all the summary information of data going in and out for a particular project. It also allows the user to drill down and find the required item. The Single menu option feature has search capability to fasten the process of identification.

Project Setup for Replication of Configuration

Organizations can easily replicate the configuration done for one project to another using this interface. They can also create multiple Workspace templates in Kovair with different combinations of tools that they require on a regular basis. Based on the project requirements, they can choose any of the templates or create a new one instantly. Once created, the project is ready to run.

Conclusion

The breadth of Kovair's integration capabilities sets it apart from other vendors in the integration space. Kovair provides the customer with an option to mix and blend the different flavors of integration technologies – federation, synchronization and linking, making sure that customers always get the integration they want. However complex the integration use case, Kovair can implement the same. The robust multi-level reliability mechanisms in Kovair Omnibus ensure zero error synchronization between tools. We are confident that choosing Kovair will provide you with better technology capabilities that are very unique to Kovair.